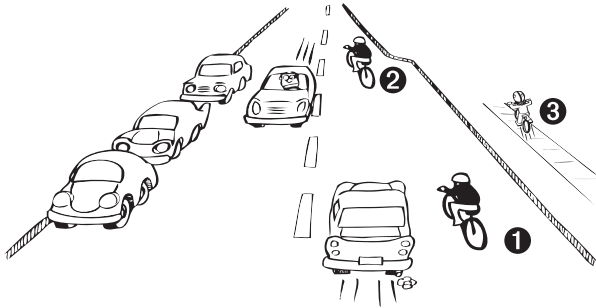


WHERE BIKERS SHOULD RIDE



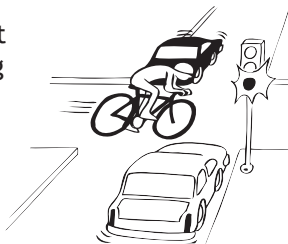
- 1 In a wide lane, bicyclists can share the lane with car drivers.
- 2 In a narrow lane, bicyclists should ride in the middle so cars don't squeeze them out of the traffic lane.
- 3 Kids usually ride bicycles on sidewalks. The law says people over 11 years old should ride on the street.

BICYCLISTS MIGHT SUPRISE YOU

The law says that adult bicyclists must ride in the street and obey all of the same rules as car drivers. **But not all bicyclists do!** Use your driving skills to avoid crashes, even when it's not your fault.

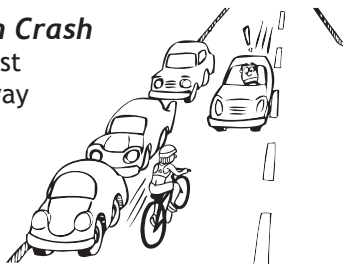
Avoid a Side Hit

When you see a bicyclist on a cross street coming to a red light or stop sign, get ready to brake. The bicyclist might cross in front of you.



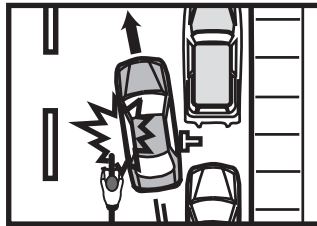
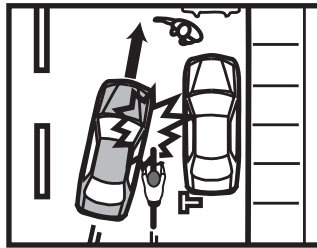
Avoid a Head-on Crash

If you see a bicyclist riding the wrong way (against traffic) slow down and pass with lots of room.



YIELD TO BICYCLISTS WHEN PULLING OVER

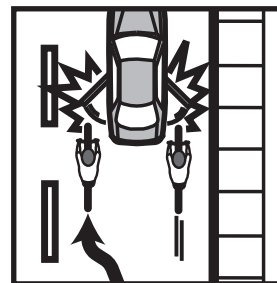
- 1 Before you pull over, put on your **turn signal**, then look over your shoulder to check for bicyclists. If you see any bicyclists, **yield**. Let them pass before you pull over.
- 2 When you stop temporarily, put on your **hazard lights** so bicyclists know it's safe to pass.
- 3 Before you pull out, use a turn signal. Look over your left shoulder for bicyclists in your **blind spot**.



SAFELY EXIT YOUR VEHICLE: AVOID A "DOORING"

It is not always safe to exit on the curb side. Pull over as far as possible and **always warn passengers** to:

- 1 Look for bicyclists before opening the door.
- 2 Keep the door closed until the bicyclists pass.



Before exiting your vehicle on the drivers side, **check over your shoulder** for bicyclists.

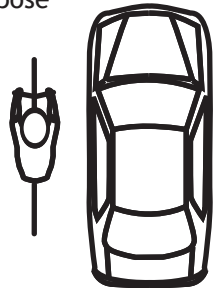
TIPS FOR MOTORISTS

Sharing the Road with Bicycle Riders

Why should you learn to DRIVE next to BICYCLISTS?

Bicyclists and motorists share all the same rights and responsibilities on the road.

The law requires bicyclists to ride in the street with cars and trucks, which pose the biggest danger to bicyclists. Crashes with motor vehicles cause more injuries than any other type of bicycle crash.



As a driver, it is your responsibility to look out for more vulnerable users of the roads, like bicyclists and pedestrians. **Responsible driving helps prevent injuries and save lives.**

Why it's GOOD for Chicago to have MORE bicyclists on the roads:

Less car traffic: Bicycling is a practical way to run errands, travel to work and deliver packages without increasing car traffic and congestion.

Clean air: Chicago faces big problems with pollution. When people ride bikes instead of driving, it helps keep the air clean.

Healthy citizens: Bicycling helps people stay active and healthy.

Cycling is fun: Bicycling is good recreation for residents and tourists.

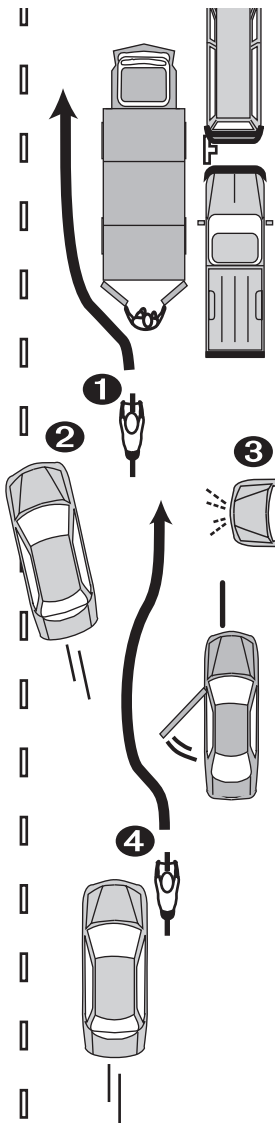


Funded by the Illinois Department of Transportation, Division of Traffic Safety. Created by the Chicagoland Bicycle Federation for the Chicago Department of Transportation. Copyright © 2007 by the Chicago Department of Transportation.

www.ChicagoBikes.org

SHARING THE ROAD WITH BICYCLISTS

1 Bicyclists often must *merge* with faster moving traffic to avoid hazards and double-parked vehicles. When bicyclists merge in front of you, let them in and don't follow too closely. Don't honk at a bicyclists unless it is a case of extreme danger.

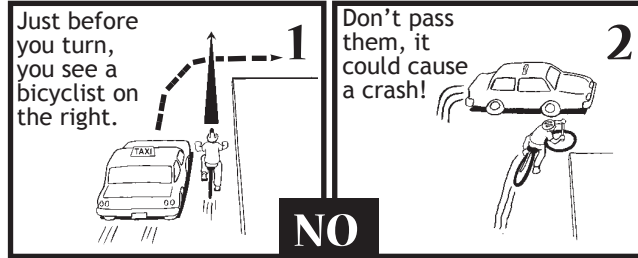


2 If you can, you should change lanes before passing bicyclists. Always slow down and pass them with at least **three feet** of space. Then wait until you can see them in your mirror before going back into the lane.

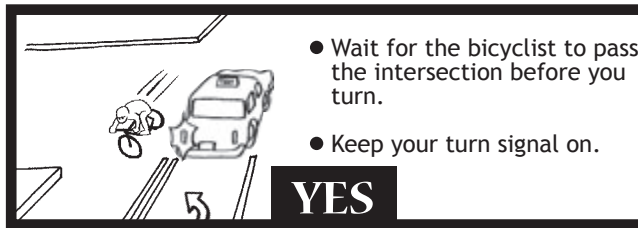
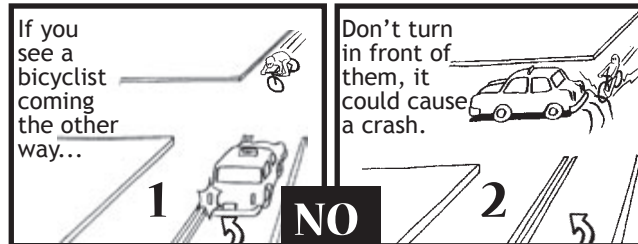
3 Avoid a *drive-out*. Before exiting an alley or driveway, stop, sound your horn, and look for bicyclists and pedestrians on the sidewalk and street.

4 This car is passing too closely for the bicyclists to avoid hazards (like opening car doors). To avoid a crash, always leave at least **three feet** of space between any bicyclist and your car.

TURNING RIGHT: Always look for and yield to bicyclists



TURNING LEFT: Bicyclists can move faster than you think



BICYCLIST TURN SIGNALS

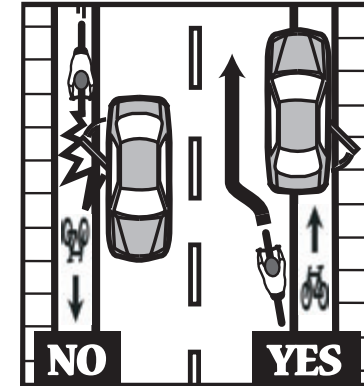
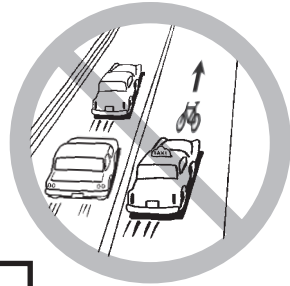


Bicyclists often use hand signals when they are going to turn.

BIKE LANES

The fine for driving or parking in a bike lane is \$100 unless you are just about to turn or parallel park.

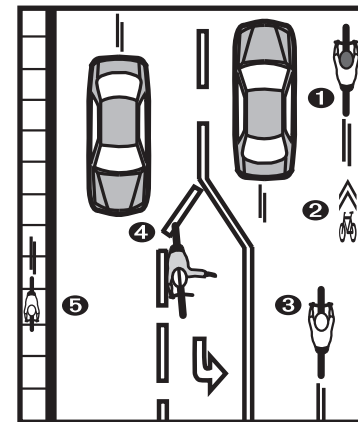
When entering the bike lane to turn or parallel park, always:



- Yield to bicyclists.
- Use your turn signal.
- Pull all the way into the bike lane so bicyclists will pass on the left.

BE AWARE OF BICYCLE TRAFFIC

- 1** Bicyclists usually ride just to the right of faster-moving traffic.
- 2** If you see this symbol on the pavement, it means you will likely have to share a lane with a bicyclist.



- 3** Where a lane is too narrow, bicyclists may ride in the middle. Change lanes before you pass them and leave at least **three feet**. Don't follow closely because bicyclists can stop suddenly.
- 4** The law says bicyclists may use the **left lane** to turn. Let them merge and don't

follow too closely. Before moving into a left turn lane, check over your left shoulder for bicyclists.

- 5** Children under 12 may bicycle on **sidewalks**. When you see kids in crosswalks or near intersections, get ready to stop for them.